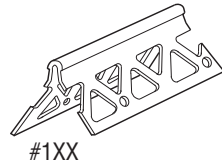
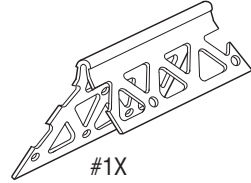
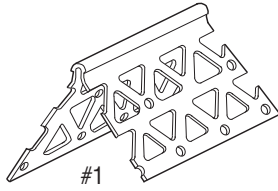
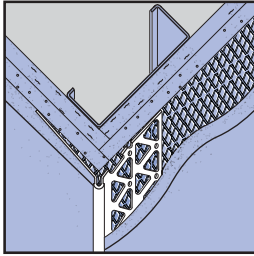
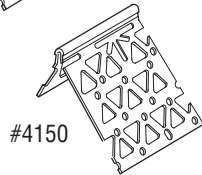
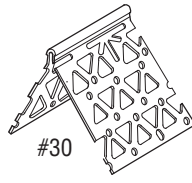
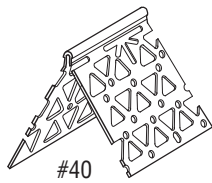
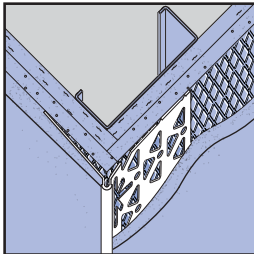


Corner Beads



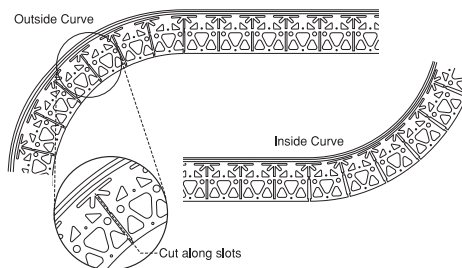
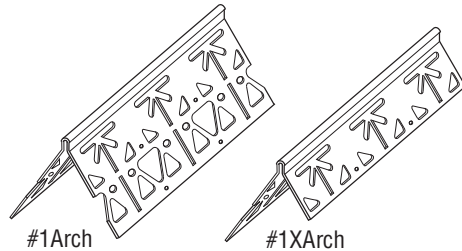
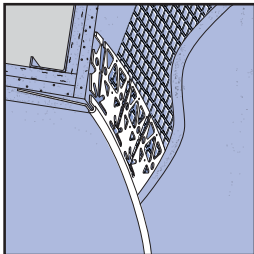
PRODUCT NUMBER	GROUND	DIMENSIONS	PIECES PER BOX
#1 (7', 8', 9', 10')	ANY	2-1/2" x 2-1/2", perforated flanges	50
#2 (8', 10')	ANY	2-3/4" x 2-3/4", perforated flanges	40
<p>#1 Corner Bead – Provides hard-to-damage, rust-proof straight corners, easily curved for smooth arches.</p> <p>#2 Corner Bead – Heavier version of our #1 Corner Bead with wider flanges. Use where a more durable corner is required.</p>			
#1X (7', 8', 9', 10')	ANY	2-1/2" x 1-1/2", perforated flanges	50
#2X (8', 10')	ANY	2-3/4" x 1-1/2", perforated flanges	40
<p>#1X Corner Bead – Provides hard-to-damage, rust-proof straight corners, with one 1-1/2" flange for narrow returns, easily curved for smooth arches.</p> <p>#2X Corner Bead – Heavier version of our #1X Corner Bead. Use where a more durable corner is required.</p>			
#1XX (7', 8', 9', 10')	ANY	1-1/2" x 1-1/2", perforated flanges	50
<p>#1XX Corner Bead – Specialty Corner Bead for narrow bands and reveals.</p>			

Jumbo Corner Beads



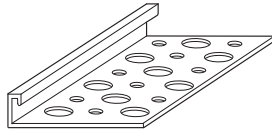
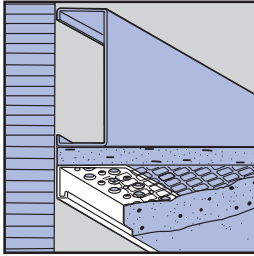
PRODUCT NUMBER	GROUND	DIMENSIONS	PIECES PER BOX
#40	ANY	4-1/4" x 4-1/4", perforated flanges	25
#30	ANY	3" x 3", perforated flanges	25
#43	ANY	4-1/4" x 3", perforated flanges	25
#4150	ANY	4-1/4" x 1-1/2", perforated flanges	25
#3150	ANY	3" x 1-1/2", perforated flanges	25
<p>Jumbo Corner Beads – Designed for deep fills or irregular corner conditions. U.S. Patent Nos. 5,816,002 and 6,070,374.</p>			

Archmaker™ Corner Beads



PRODUCT NUMBER	GROUND	DIMENSIONS	PIECES PER BOX
#1Arch	ANY	2-1/2" x 2-1/2", perforated flanges	50
#2Arch	ANY	2-3/4" x 2-3/4", perforated flanges	40
<p>1Arch – True, uniform, curved or arched reinforcement. Conforms to most arched and curved designs.</p> <p>2Arch – Heavier version of our 1Arch Corner Bead. Use for increased damage resistance.</p> <p>U.S. Patent Numbers 5,816,002 and 6,070,374.</p>			
#1XArch	ANY	2-1/2" x 1-1/2", perforated flanges	50
#2XArch	ANY	2-3/4" x 1-1/2", perforated flanges	40
<p>1XArch – True, uniform, curved or arched reinforcement with one 1-1/2" flange for narrow returns. Conforms to most arched and curved designs.</p> <p>2XArch – Heavier version of our 1XArch Corner Bead with one 1-1/2" flange for narrow returns. Use for increased damage resistance.</p> <p>U.S. Patent Numbers 5,816,002 and 6,070,374.</p>			

Casing Beads/Plaster Stops

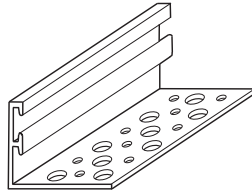
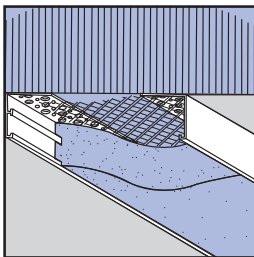


PRODUCT NUMBER	GROUND	DIMENSIONS	PIECES PER BOX
6625	1/4"	1-3/4" flange width perforated flange	100
6638	3/8"		100
6650	1/2"		100
6658	5/8"		100
6675	3/4"		75
6678	7/8"		75
66100	1"		75

Casing Beads – Terminate stucco & plaster against doors, windows and dissimilar materials.

Caulk all intersections, butt joints, ends and corners at time of installation.

Bandmaker™ Series Casing Beads

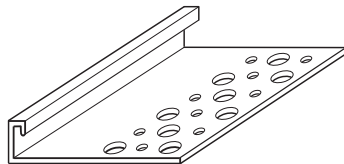
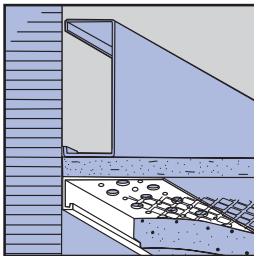


PRODUCT NUMBER	GROUND	DIMENSIONS	PIECES PER BOX
66100 "T"	1"	1-3/4" flange width perforated flange	75
66125	1-1/4"		50
66150	1-1/2"		50
66175	1-3/4"		40
66200	2"		40

"Bandmaker" Series Casing Beads – Designed with a reinforcing rib to assist in keying heavy material fills, when "Bands" are used in architectural designs.

Caulk all intersections, butt joints, ends and corners at time of installation.

Long Flange Casing Beads/Plaster Stops

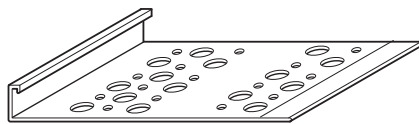
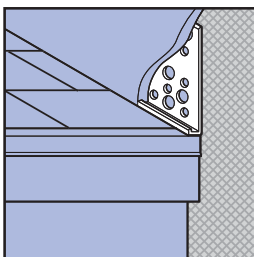


PRODUCT NUMBER	GROUND	DIMENSIONS	PIECES PER BOX
6638L	3/8"	2-1/2" flange width perforated flange	75
6650L	1/2"		75
6658L	5/8"		75
6675L	3/4"		50
6678L	7/8"		50
66100L	1"		50

Long Flange Casing Beads – Terminate stucco & plaster against doors, windows and other dissimilar materials. Used in those conditions that require a longer flange.

Caulk all intersections, butt joints, ends and corners at time of installation.

XL Long Flange Casing Beads/Plaster Stops



PRODUCT NUMBER	GROUND	DIMENSIONS	PIECES PER BOX
6650XL	1/2"	5" flange width perforated flange	40
6658XL	5/8"		40
6675XL	3/4"		40
6678XL	7/8"		40
66100XL	1"		25
66125XL	1-1/4"		25
66150XL	1-1/2"		20
66175XL	1-3/4"		20
66200XL	2"		20

XL Long Flange Casing Beads – Same as our Long Flange Casing Beads with wider perforated flange.

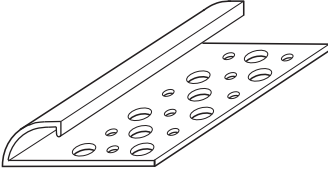
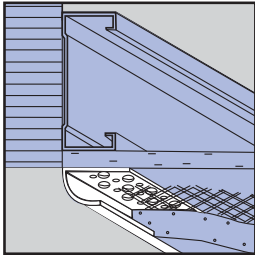
Caulk all intersections, butt joints, ends and corners at time of installation.

Bullnose Casing Beads

PRODUCT NUMBER	GROUND	DIMENSIONS	PIECES PER BOX
6650B	1/2"	2-1/4" flange width perforated flange	60
6658B	5/8"		60
6675B	3/4"		50
6678B	7/8"		50
66100B	1"		50

3/4" Radius Bullnose Casing Beads – Terminate stucco & plaster against windows, doors and other dissimilar materials. Designed to complement the Vinyl Corp.™ 3/4" Radius Corner Beads.

Caulk all intersections, butt joints, ends and corners at time of installation.

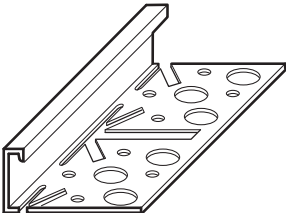
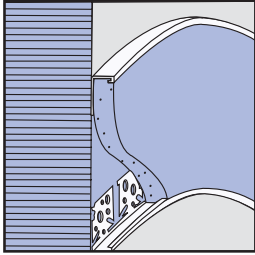
Archmaker™ Casing Beads

PRODUCT NUMBER	GROUND	DIMENSIONS	PIECES PER BOX
6625A	1/4"	1-3/4" flange width perforated flange	100
6638A	3/8"		100
6650A	1/2"		100
6658A	5/8"		100
6675A	3/4"		75
6678A	7/8"		75
66100A	1"		75

Archmaker™ Casing Beads – Designed to easily conform to most arched and curved designs.

U.S. Patent Numbers 5,816,002 and 6,070,374

Caulk all intersections, butt joints, ends and corners at time of installation.

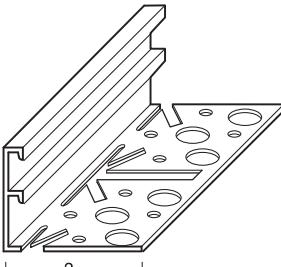
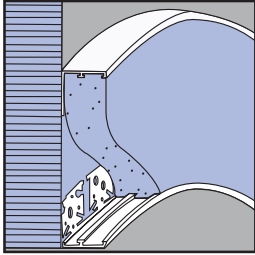
Archmaker™/Bandmaker™ Casing Beads

PRODUCT NUMBER	GROUND	DIMENSIONS	PIECES PER BOX
66125A	1-1/4"	1-3/4" flange width perforated flange	50
66150A	1-1/2"		50
66175A	1-3/4"		40
66200A	2"		40

Archmaker™/Bandmaker™ Casing Beads – Designed to easily conform to arched and curved designs with a reinforcing rib to assist in keying heavy material fills. Ideal when bands are used in architectural designs.

U.S. Patent Numbers 5,816,002 and 6,070,374.

Caulk all intersections, butt joints, ends and corners at time of installation.

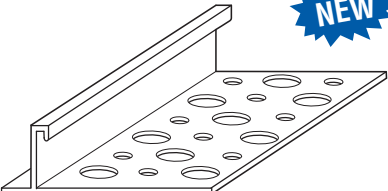
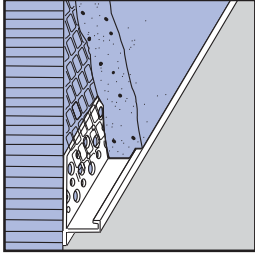



D-66 Drip Plaster Stop

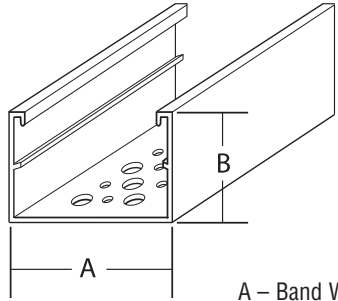
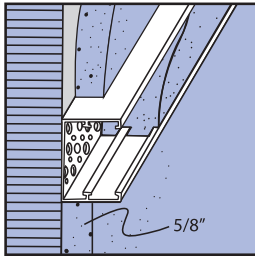
PRODUCT NUMBER	GROUND	DIMENSIONS	PIECES PER BOX
D-6625	1/4"	1-3/4" flange width perforated flange, 1/4" drip leg	100
D-6638	3/8"		75
D-6650	1/2"		75
D-6658	5/8"		75
D-6675	3/4"		50
D-6678	7/8"		50
D-66100	1"		50

D-66 Drip Plaster Stop – Designed to terminate exterior plaster with a moisture trap, available with weep holes.

Caulk all intersections, butt joints, ends and corners at time of installation.

BM 66 Series 1-Piece Bandmaker™



A – Band Width
B – Ground

PRODUCT NUMBER	GROUND	DIMENSIONS	PIECES PER BOX
BM66100-200	1"	1-Piece BandMaker™ with 2" to 3" reinforced flanges	16
BM66150-200	1-1/2"		16
BM66200-200	2"		12
BM66100-250	1"		12
BM66150-250	1-1/2"		12
BM66200-250	2"		12
BM66100-300	1"		12
BM66150-300	1-1/2"		12
BM66200-300	2"		12

1-Piece BandMaker – Provides a band of one piece. Saving labor time.
Caulk all intersections, butt joints, ends and corners at time of installation.



PRODUCT NUMBER	GROUND	DIMENSIONS	PIECES PER BOX
6658-60	5/8"	2" flange width perforated flange	50
6675-60	3/4"		50
6678-60	7/8"		50
66100-60	1"		50
66125-60	1-1/4"		50
66150-60	1-1/2"		50
66200-60	2"		40

Angled Casing Beads

Angled Casing Beads – Terminate stucco & plaster against windows, doors and other dissimilar materials. Provides a tapered transition, to allow rain flush action.

Caulk all intersections, butt joints, ends and corners at time of installation.

NOTE: Do not cover exterior angle of bead with stucco or plaster

PRODUCT NUMBER	GROUND	DIMENSIONS	PIECES PER BOX
6638W	3/8"	1-3/4" flange width perforated flange	100
6650W	1/2"		100
6658W	5/8"		100
6675W	3/4"		75
6678W	7/8"		75
66100W	1"		75

Casing Beads with Weep Holes

Casing Beads with Weep Holes – Beads are used to terminate stucco & plaster at the base of a wall to provide drainage.

Caulk all intersections, butt joints, ends and corners at time of installation.

PRODUCT NUMBER	REVEAL	DIMENSIONS	PIECES PER BOX
RS6658-50	1/2"	1-3/4" flange width 5/8" ground, perforated flange	20
RS6658-75	3/4"		20
RS6658-100	1"		20
RS6658-125	1-1/4"		20

Casing Beads with Reveal

Casing Beads with Reveal – Designed to terminate stucco & plaster at window or door opening to create a reveal.

Caulk all intersections, butt joints, ends and corners at time of installation.

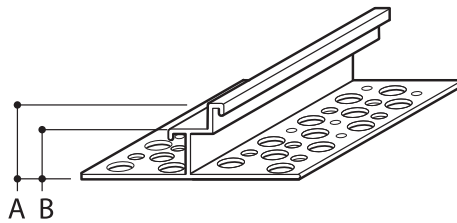
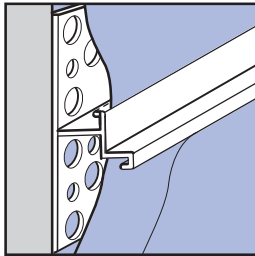
PRODUCT NUMBER	GROUND	DIMENSIONS	PIECES PER BOX
RS6638-50W	3/8"	1-3/4" flange width 1/2" reveal, perforated flange	30
RS6650-50W	1/2"		20
RS6658-50W	5/8"		20
RS6675-50W	3/4"		20
RS6678-50W	7/8"		20

Casing Beads (with Weep Holes for 1/2" Sheathing)

Casing Bead with Weep Holes for 1/2" Sheathing – Designed to terminate stucco at base of wall and provide cap for 1/2" sheathing. Weep holes provide for drainage at base of wall.

Caulk all intersections, butt joints, ends and corners at time of installation.

Double Ground (Bandmaker™ Series)

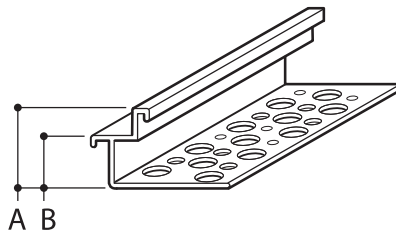
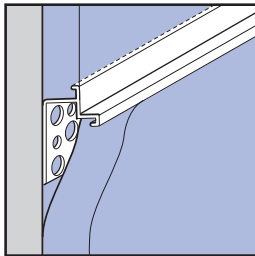


PRODUCT NUMBER	GRND. A	GRND. B	DIMENSIONS	PIECES PER BOX
DGBM125-58	1-1/4"	5/8"	3-1/4" overall width, perforated flanges	15
DGBM125-75	1-1/4"	3/4"		15
DGBM150-58	1-1/2"	5/8"		15
DGBM150-75	1-1/2"	3/4"		15

Double Ground Bandmaker™ – Assists in screeding on both sides of the band. Perforated flanges on both sides allow for a more secure attachment.

Caulk all intersections, butt joints, ends and corners at time of installation.

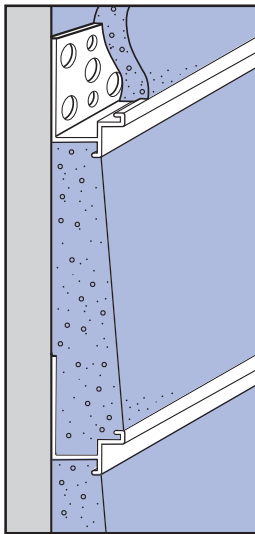
Step Bead



PRODUCT NUMBER	GRND. A	GRND. B	DIMENSIONS	PIECES PER BOX
STB75-50	3/4"	1/2"	1-3/4" overall width, perforated flanges	50
STB78-58	7/8"	5/8"		50
STB100-50	1"	1/2"		50
STB125-58	1-1/4"	5/8"		30
STB150-50	1-1/2"	1/2"		40
STB150-75	1-1/2"	3/4"		30

Step Bead – A casing bead with double ground, assists in screeding of adjoining stucco.

Caulk all intersections, butt joints, ends and corners at time of installation.

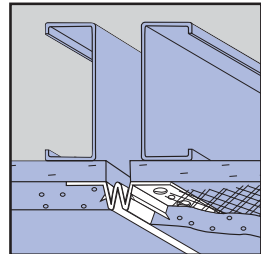
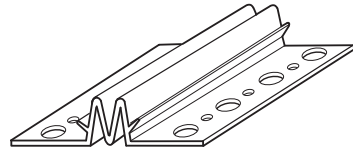


Mini Control Joints

PRODUCT NUMBER	GROUND	DIMENSIONS	PIECES PER BOX
M-1538	3/8"	2-1/4" flange width, perforated flange	50
M-1550	1/2"		50
M-1558	5/8"		50
M-1575	3/4"		40
M-1578	7/8"		30
M-15100	1"		30

M-15 Control Joints – A contractors dream. Designed to relieve stress and assist in controlling cracking in large areas of walls and ceilings. Vinyl Corp.'s specially designed Connector Clips are provided for alignment and base for sealants.

Caulk all intersections, butt joints, ends and corners at time of installation.

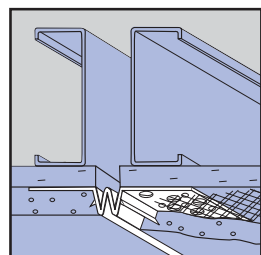
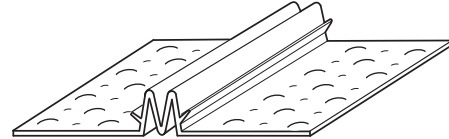


Control Joints

PRODUCT NUMBER	GROUND	DIMENSIONS	PIECES PER BOX
1538	3/8"	4" flange width, perforated flange	35
1550	1/2"		35
1558	5/8"		30
1575	3/4"		26
1578	7/8"		20
15100	1"		20

Control Joints – Designed to relieve stress and assist in controlling cracking in large areas of walls and ceilings. Vinyl Corp.'s specially designed Connector Clips are provided for alignment and base for sealants.

Caulk all intersections, butt joints, ends and corners at time of installation.

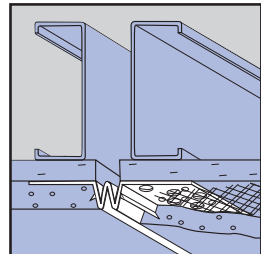
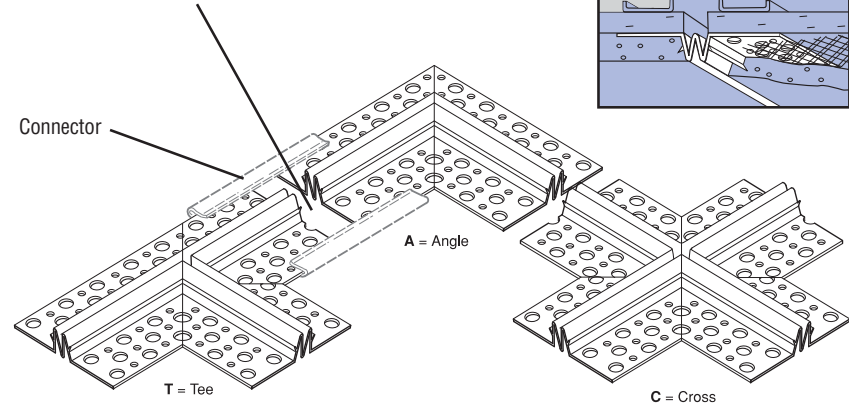


NOTE: Connector Clips are not provided with 3/8" ground. Positive attachment of each flange of control joint to separate framing is required.

Control Joints

PRODUCT NUMBER	GROUND	DIMENSIONS
1538A	3/8"	4" overall width, with perforated flange
1550A	1/2"	
1558A	5/8"	
1575A	3/4"	
1578A	7/8"	
15100A	1"	
1538C	3/8"	A=Angle C=Cross T=Tee
1550C	1/2"	
1558C	5/8"	
1575C	3/4"	
1578C	7/8"	
15100C	1"	
1538T	3/8"	A=Angle C=Cross T=Tee
1550T	1/2"	
1558T	5/8"	
1575T	3/4"	
1578T	7/8"	
15100T	1"	

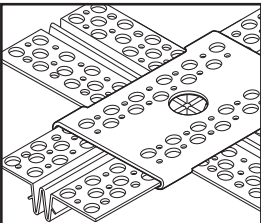
NOTE: Parts are separated for illustration purpose only. Pieces must be butted at time of installation.



Control Joint Intersections – Designed to relieve stress and assist in controlling cracking in large areas of walls and ceilings. Specially designed Connector Clips are provided for alignment and to provide a base for caulking. Pieces per carton are determined by product mix per order.

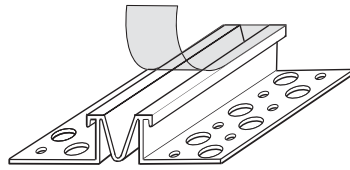
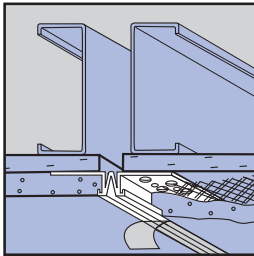
Caulk all intersections, butt joints, ends and corners at time of installation.

NOTE: Connector Clips are not provided with 3/8" ground. The Vinyl Corp.™ design of Control Joint Intersections provides an opening behind the connector for proper caulking. All Intersections should be embedded in caulking when applied. Custom factory-fabricated made-to-order part, parts ordered cannot be returned for credit.



Connector Opening for caulking

Control Joints (with removable tape)



NOTE: Recommended for smooth finishes.
Positive attachment of each flange of Control Joint to separate framing is required.

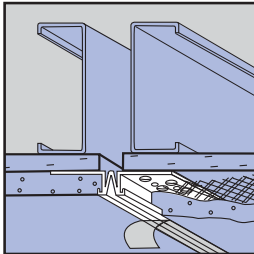
PRODUCT NUMBER	GROUND	DIMENSIONS	PIECES PER BOX
1525X	1/4"	2-1/4" flange width	50
1538X	3/8"	3-1/4" flange width, perforated flange, removable tape	50
1550X	1/2"		40
1558X	5/8"		35
1575X	3/4"		30
1578X	7/8"		30
15100X	1"		30

Control Joint (with Removable Tape) – Provides stress relief and assists in controlling cracking in large areas of walls and ceilings. Removable tape protects deep "V" expansion slot during construction. Specially designed Connector Clips are provided for alignment and base for sealants.

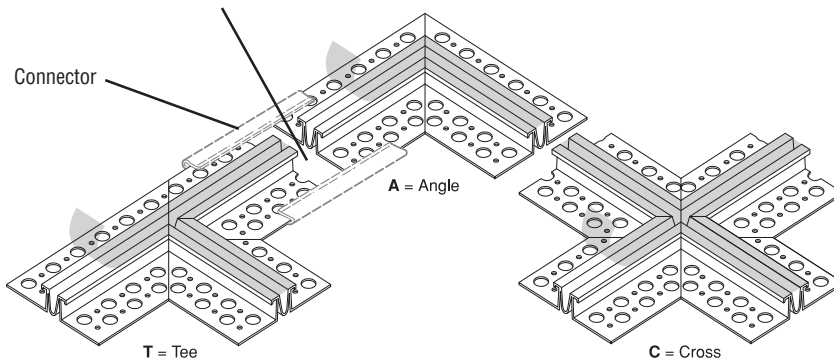
Note: Connector Clips are not provided 1/4" or 3/8" grounds.

Caulk all intersections, butt joints, ends and corners at time of installation.

Control Joint Intersections (with removable tape)



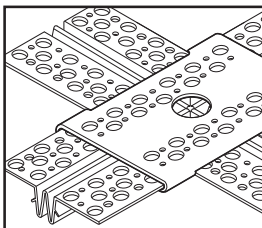
NOTE: Parts are separated for illustration purpose only. Pieces must be butted at time of installation.



PRODUCT NUMBER	GROUND	DIMENSIONS
1525XA	1/4"	2-1/4" flange width
1538XA	3/8"	3-1/4" flange width, with perforated flange
1550XA	1/2"	
1558XA	5/8"	
1575XA	3/4"	
1578XA	7/8"	
15100XA	1"	
1525XC	1/4"	2-1/4" flange width
1538XC	3/8"	3-1/4" flange width, with perforated flange
1550XC	1/2"	
1558XC	5/8"	
1575XC	3/4"	
1578XC	7/8"	
15100XC	1"	
1525XT	1/4"	2-1/4" flange width
1538XT	3/8"	3-1/4" flange width, with perforated flange
1550XT	1/2"	
1558XT	5/8"	
1575XT	3/4"	
1578XT	7/8"	
15100XT	1"	

NOTE: The Vinyl Corp.™ design of Control Joint Intersections provides an opening behind the connector for proper caulking. All Intersections should be embedded in caulking when applied. Recommended for smooth finishes.

Custom factory-fabricated made-to-order part, parts ordered cannot be returned for credit.



Connector Opening for caulking

Control Joint Intersections (with Removable Tape) – Designed to relieve stress and assist in controlling cracking in large areas of walls and ceilings. Removable tape protects deep "V" expansion slot during construction. Specially designed Connector Clips are provided for alignment and to provide a base for caulking.

Note: Connector Clips are not provided with 1/4" or 3/8" grounds. Pieces per carton are determined by product mix per order.

Caulk all intersections, butt joints, ends and corners at time of installation.

PRODUCT NUMBER	GROUND	DIMENSIONS	PIECES PER BOX	
1578-50UL	7/8" x 1/2"	3-1/2" solid flange, 1-3/4" perforated flange	15	<h2 style="color: white;">Mid Wall (M Style) Control Joint</h2>
1578-58UL	7/8" x 5/8"		15	
<p>Mid Wall Control Joints – Designed to relieve stress and assist in controlling cracks in exterior wall finish. Intersections of Ts available. US Patent Number 7,757,450 Caulk all intersections, butt joints, ends and corners at time of installation.</p>				

PRODUCT NUMBER	GROUND	DIMENSIONS	PIECES PER BOX	
1578-50WX	7/8" x 1/2"	3-1/2" solid flange, 1-3/4" perforated flange	15	<h2 style="color: white;">Mid Wall Control Joint</h2>
1578-58WX	7/8" x 5/8"		15	
<p>Mid Wall Control Joints – Designed to relieve stress and assist in controlling cracks in exterior wall finish. Intersections of Ts available. US Patent Number 7,757,450 Caulk all intersections, butt joints, ends and corners at time of installation.</p>				

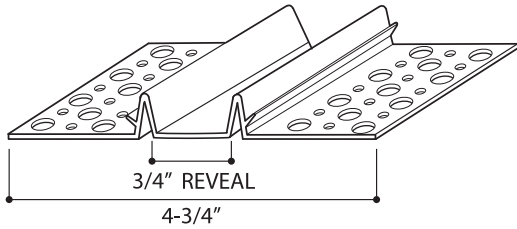
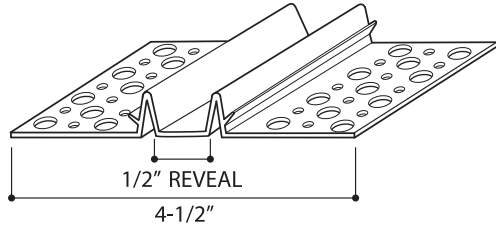
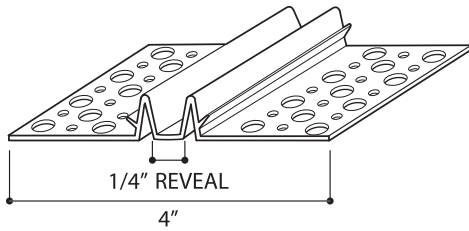
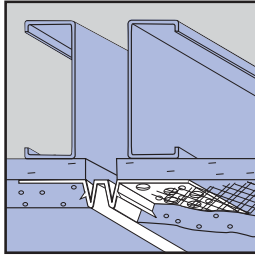
NOTE: Product has weep holes and tape, not shown here.

PRODUCT NUMBER	GROUND	DIMENSIONS	PIECES PER BOX	
SPS-38	3/8"	2-1/4" flange width, perforated flange	50	<h2 style="color: white;">Single V Hump Screed</h2>
SPS-50	1/2"		50	
SPS-58	5/8"		50	
SPS-75	3/4"		40	
SPS-78	7/8"		30	
SPS-100	1"		30	
<p>SPS – Series is a screed design to be able to break large areas of plaster or stucco. Caulk all intersections, butt joints, ends and corners at time of installation.</p>				

PRODUCT NUMBER	GROUND	DIMENSIONS	PIECES PER BOX	
F1525X	1/4"	1-3/4" flange width, perforated flange, removable tape	50	<h2 style="color: white;">"F" Control Joints (with removable tape)</h2>
F1538X	3/8"		50	
F1550X	1/2"		40	
F1558X	5/8"		35	
F1575X	3/4"		30	
F1578X	7/8"		30	
F15100X	1"		30	
<p>"F" Control Joints with Removable Tape – Designed by Vinyl Corp.™ to provide stress relief at the juncture of walls, ceilings, floor lines, or other dissimilar materials. Removable tape protects deep "V" expansion slot during construction. Caulk all intersections, butt joints, ends and corners at time of installation.</p>				

NOTE: Recommended for smooth finishes.

Control Joints & Reveal Combinations



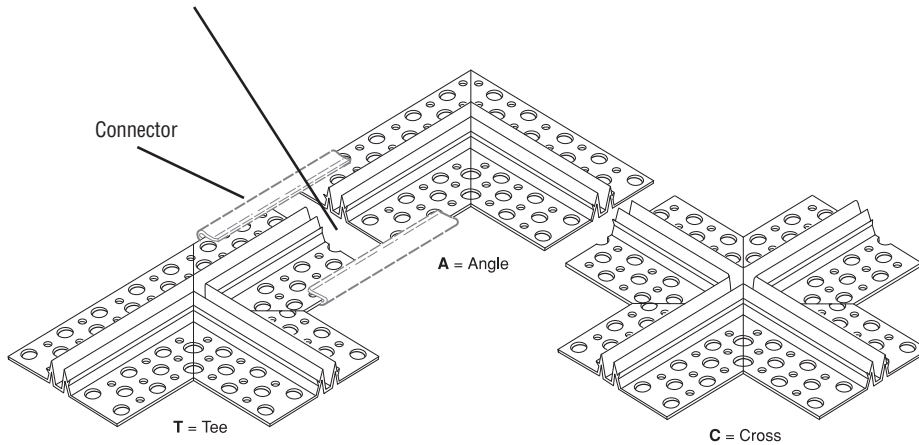
PRODUCT NUMBER	GROUND	DIMENSIONS	REVEAL	PIECES PER BOX
1538R-25	3/8"	4" flange width, perforated flange	1/4"	25
1550R-25	1/2"		1/4"	25
1558R-25	5/8"		1/4"	20
1575R-25	3/4"		1/4"	20
1578R-25	7/8"		1/4"	15
15100R-25	1"		1/4"	15
1538R-50	3/8"	4-1/2" flange width, perforated flange	1/2"	25
1550R-50	1/2"		1/2"	25
1558R-50	5/8"		1/2"	20
1575R-50	3/4"		1/2"	20
1578R-50	7/8"		1/2"	15
15100R-50	1"		1/2"	15
1538R-75	3/8"	4-3/4" flange width, perforated flange	3/4"	25
1550R-75	1/2"		3/4"	25
1558R-75	5/8"		3/4"	20
1575R-75	3/4"		3/4"	20
1578R-75	7/8"		3/4"	15
15100R-75	1"		3/4"	15

Control Joints & Reveal Combinations – Designed to relieve stress and assist in controlling cracking in large areas of walls and ceilings also creating 1/4" to 1-1/2" reveal in Stucco and Plaster. Surface Connector Clips are provided for alignment and base for sealants. Intersection of Crosses, T's, L's, Inside and Outside Corners and End Closures are available.

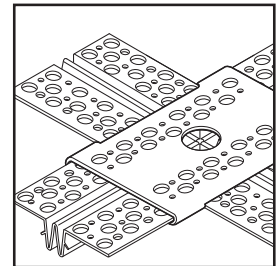
Caulk all intersections, butt joints, ends and corners at time of installation.

NOTE: Positive attachment of each flange of control joint to separate framing is required.

NOTE: Parts are separated for illustration purpose only. Pieces must be butted at time of installation.



NOTE: The Vinyl Corp.™ design of Control Joint Intersections provides an opening behind the connector for proper caulking. All Intersections should be embedded in caulking when applied. Custom factory-fabricated made-to-order part, parts ordered cannot be returned for credit.



Connector Opening for caulking

Control Joints & Reveal Combinations

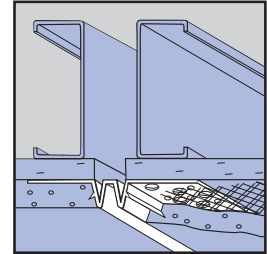
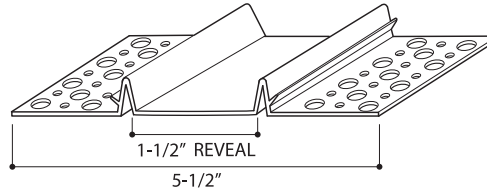
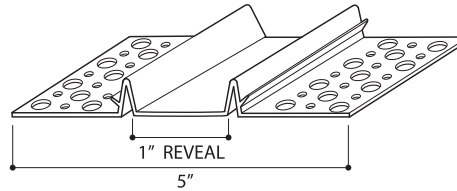
PRODUCT NUMBER	GROUND	DIMENSIONS	REVEAL	PIECES PER BOX
1538R-100	3/8"	5" flange width, perforated flange	1"	18
1550R-100	1/2"		1"	18
1558R-100	5/8"		1"	15
1575R-100	3/4"		1"	15
1578R-100	7/8"		1"	14
15100R-100	1"		1"	14

1538R-150	3/8"	5-1/2" flange width, perforated flange	1-1/2"	18
1550R-150	1/2"		1-1/2"	18
1558R-150	5/8"		1-1/2"	15
1575R-150	3/4"		1-1/2"	15
1578R-150	7/8"		1-1/2"	14
15100R-150	1"		1-1/2"	14

Control Joints & Reveal Combinations – Designed to relieve stress and assist in controlling cracking in large areas of walls and ceilings also creating 1/4" to 1-1/2" reveal in Stucco and Plaster. Surface Connector Clips are provided for alignment and base for sealants.

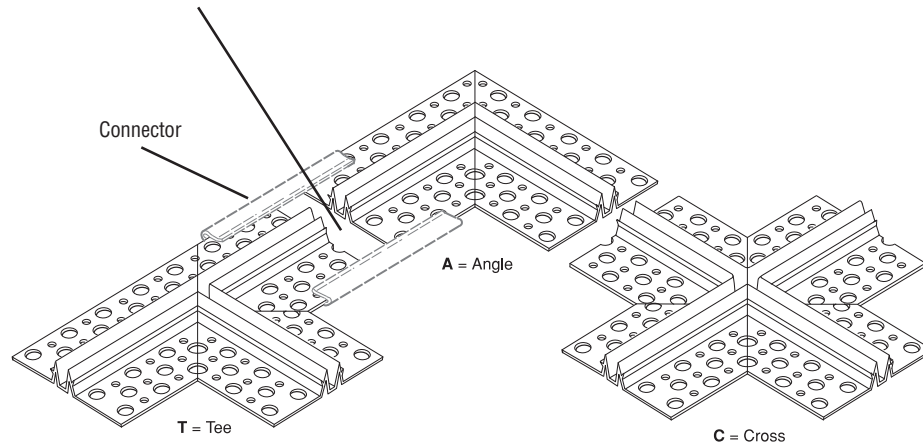
Intersection of Crosses, T's, L's, Inside and Outside Corners and End Closures are available.

Caulk all intersections, butt joints, ends and corners at time of installation.

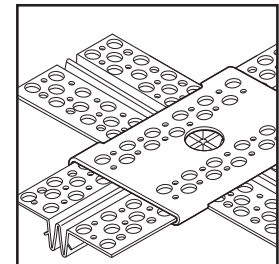


NOTE: Positive attachment of each flange of control joint to separate framing is required.

NOTE: Parts are separated for illustration purpose only. Pieces must be butted at time of installation.



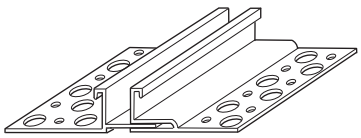
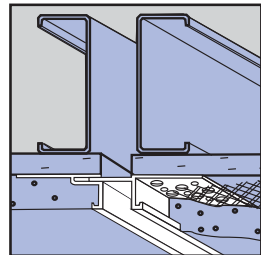
NOTE: The Vinyl Corp.™ design of Control Joint Intersections provides an opening behind the connector for proper caulking. All Intersections should be embedded in caulking when applied. Custom factory-fabricated made-to-order part, parts ordered cannot be returned for credit.



Connector Opening for caulking

PRODUCT NUMBER	GROUND	DIMENSIONS	PIECES PER BOX
4038-50	3/8"	1/2" reveal (adj. 1/4" to 5/8") 4" to 4-3/8" overall width, perforated flanges	25
4050-50	1/2"		25
4058-50	5/8"		25
4075-50	3/4"		25
4078-50	7/8"		20
40100-50	1"		20

Expansion Joints (Slip Joint) 1/2" Reveal

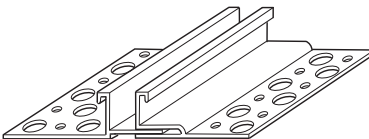
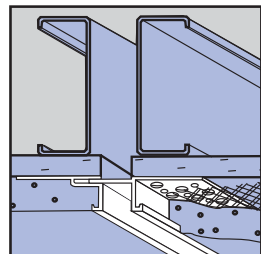



Expansion Joints – Designed to relieve stress in wall and ceiling areas where excessive horizontal and vertical movements might occur. Includes an additional design feature of a 1/2" reveal.

Caulk all intersections, butt joints, ends and corners at time of installation.

PRODUCT NUMBER	GROUND	DIMENSIONS	PIECES PER BOX
4038-100	3/8"	1" reveal (adj. 3/4" to 1-1/8") 4-1/2" to 4-7/8" overall width, perforated flanges	20
4050-100	1/2"		20
4058-100	5/8"		20
4075-100	3/4"		20
4078-100	7/8"		15
40100-100	1"		15

Expansion Joints (Slip Joint) 1" Reveal

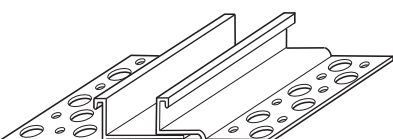
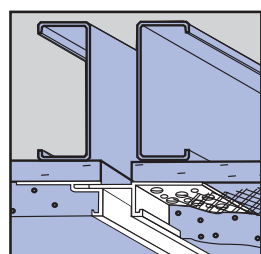



Expansion Joints – Designed to relieve stress in wall and ceiling areas where excessive horizontal and vertical movements might occur. Includes an additional design feature of a 1" reveal.

Caulk all intersections, butt joints, ends and corners at time of installation.

PRODUCT NUMBER	GROUND	DIMENSIONS	PIECES PER BOX
4038-150	3/8"	1" reveal (adj. 1-1/4" to 1-5/8") 5" to 5-3/8" overall width, perforated flanges	15
4050-150	1/2"		15
4058-150	5/8"		15
4075-150	3/4"		15
4078-150	7/8"		12
40100-150	1"		10

Expansion Joints (Slip Joint) 1-1/2" Reveal

Expansion Joints – Designed to relieve stress in wall and ceiling areas where excessive horizontal and vertical movements might occur. Includes an additional design feature of a 1-1/2" reveal.

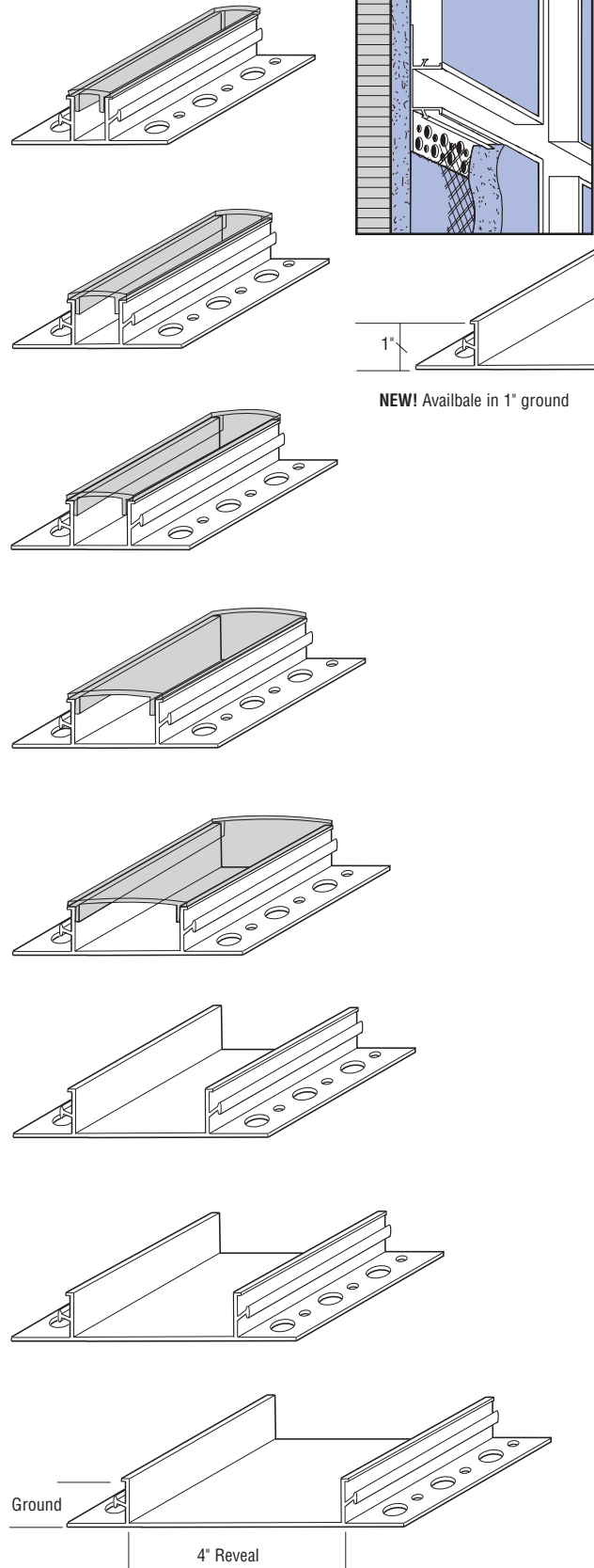
Caulk all intersections, butt joints, ends and corners at time of installation.

Channel Reveals

Stucco & Plaster

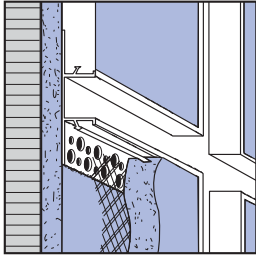
PRODUCT NUMBER	GROUND	DIMENSIONS	PIECES PER BOX
CS 25-50	1/4"	1/2" Reveal 2-1/2" overall width, perforated flanges	50
CS 38-50	3/8"		35
CS 50-50	1/2"		35
CS 58-50	5/8"		25
CS 75-50	3/4"		25
CS 78-50	7/8"		25
CS 100-50	1"		20
CS 25-75	1/4"	3/4" Reveal 3-1/4" overall width, perforated flanges	50
CS 38-75	3/8"		35
CS 50-75	1/2"		35
CS 58-75	5/8"		25
CS 75-75	3/4"		25
CS 78-75	7/8"		18
CS 100-75	1"		15
CS 25-100	1/4"	1" Reveal 3-1/4" overall width, perforated flanges	50
CS 38-100	3/8"		25
CS 50-100	1/2"		25
CS 58-100	5/8"		25
CS 75-100	3/4"		25
CS 78-100	7/8"		18
CS 100-100	1"		15
CS 25-150	1/4"	1-1/2" Reveal 3-1/4" overall width, perforated flanges	50
CS 38-150	3/8"		20
CS 50-150	1/2"		20
CS 58-150	5/8"		20
CS 75-150	3/4"		20
CS 78-150	7/8"		17
CS 100-150	1"		12
CS 25-200	1/4"	2" Reveal 4" overall width, perforated flanges	40
CS 38-200	3/8"		20
CS 50-200	1/2"		15
CS 58-200	5/8"		14
CS 75-200	3/4"		14
CS 78-200	7/8"		12
CS 100-200	1"		12
CS 25-250	1/4"	* 2-1/2" Reveal 5" overall width, perforated flanges	15
CS 50-250	1/2"		15
CS 58-250	5/8"		15
CS 75-250	3/4"		15
CS 78-250	7/8"		13
CS 100-250	1"		10
CS 25-300	1/4"	* 3" Reveal 5" overall width, perforated flanges	15
CS 50-300	1/2"		15
CS 58-300	5/8"		15
CS 75-300	3/4"		15
CS 78-300	7/8"		13
CS 100-300	1"		10
CS 25-400	1/4"	* 4" Reveal 6" overall width, perforated flanges	15
CS 50-400	1/2"		15
CS 58-400	5/8"		15
CS 75-400	3/4"		14
CS 78-400	7/8"		12
CS 100-400	1"		10

Channel Reveals – Create 1/2" to 4" reveals in stucco & plaster surfaces. Clips are provided for alignment and as base for sealants. Factory fabricated intersections of Crosses, T's, L's, Inside and Outside Corners, and End Closures of Channel reveals are available to form clear channels. Note: All with removable caps (except 1/4" & 3/8" grounds, 2-1/2", 3" & 4" reveals). All with Connector Clips (except 1/4" grounds)
Caulk all intersections, butt joints, ends and corners at time of installation.

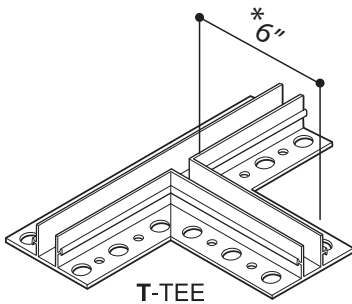
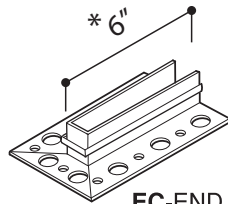
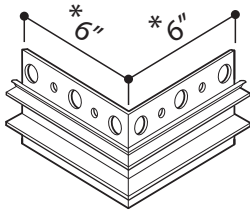
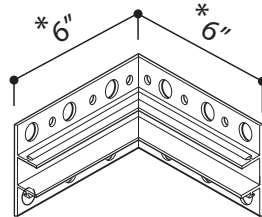
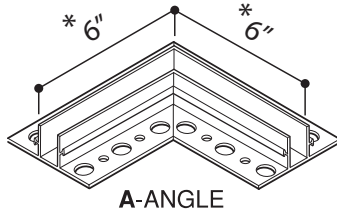
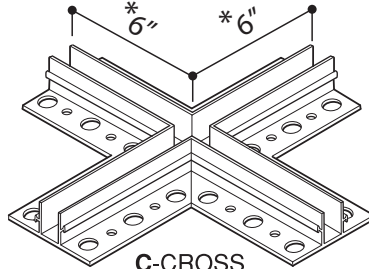


* Also available in 3/8" ground.

Channel Reveal Intersections



NEW SIZES AVAILABLE



When ordering intersections, it is recommended to order the 10' lengths to assure pieces will match.

Dissimilar Intersections Available

How to Specify : Add product suffix when ordering.

Example : CS58-300OC is 5/8" ground outside corner with a 3" reveal.

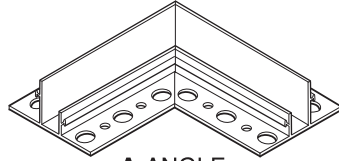
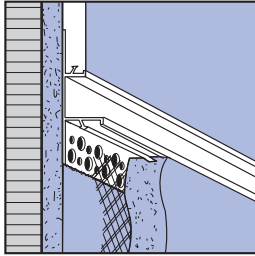
* Also available in 3/8" ground

PRODUCT NUMBER	GROUND	DIMENSIONS
CS 25-50	1/4"	1/2" Reveal 2-1/2" overall width, perforated flanges
CS 38-50	3/8"	
CS 50-50	1/2"	
CS 58-50	5/8"	
CS 75-50	3/4"	
CS 78-50	7/8"	
CS 100-50	1"	3/4" Reveal 3-1/4" overall width, perforated flanges
CS 25-75	1/4"	
CS 38-75	3/8"	
CS 50-75	1/2"	
CS 58-75	5/8"	
CS 75-75	3/4"	
CS 78-75	7/8"	
CS 100-75	1"	1" Reveal 3-1/4" overall width, perforated flanges
CS 25-100	1/4"	
CS 38-100	3/8"	
CS 50-100	1/2"	
CS 58-100	5/8"	
CS 75-100	3/4"	
CS 78-100	7/8"	
CS 100-100	1"	1-1/2" Reveal 3-1/4" overall width, perforated flanges
CS 25-150	1/4"	
CS 38-150	3/8"	
CS 50-150	1/2"	
CS 58-150	5/8"	
CS 75-150	3/4"	
CS 78-150	7/8"	
CS 100-150	1"	2" Reveal 4" overall width, perforated flanges
CS 25-200	1/4"	
CS 38-200	3/8"	
CS 50-200	1/2"	
CS 58-200	5/8"	
CS 75-200	3/4"	
CS 78-200	7/8"	
CS 100-200	1"	* 2-1/2" Reveal 5" overall width, perforated flanges
CS 25-250	1/4"	
CS 50-250	1/2"	
CS 58-250	5/8"	
CS 75-250	3/4"	
CS 78-250	7/8"	
CS 100-250	1"	* 3" Reveal 5" overall width, perforated flanges
CS 25-300	1/4"	
CS 50-300	1/2"	
CS 58-300	5/8"	
CS 75-300	3/4"	
CS 78-300	7/8"	
CS 100-300	1"	* 4" Reveal 6" overall width, perforated flanges
CS 25-400	1/4"	
CS 50-400	1/2"	
CS 58-400	5/8"	
CS 75-400	3/4"	
CS 78-400	7/8"	
CS 100-400	1"	

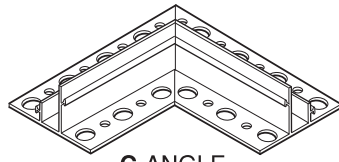
Factory Fabricated Intersections – Form 1/2" to 4" clear channels in vertical and horizontal intersections of Crosses, T's, L's, Inside & Outside Corners, and End Closures of Channel Reveals. Connector Clips are supplied for alignment and as base for sealants. Note: All with removable caps (except 1/4" & 3/8" grounds, 2-1/2", 3" & 4" reveals). All with Connector Clips (except 1/4" grounds).

Caulk all intersections, butt joints, ends and corners at time of installation.

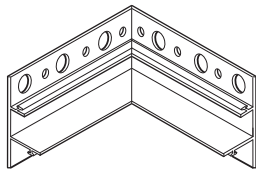
Channel Reveals Bandmaker™ Series Intersections



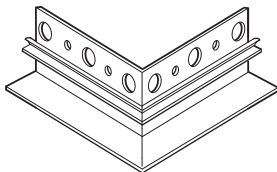
A-ANGLE



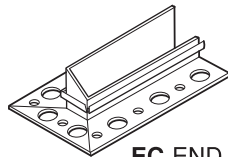
C-ANGLE



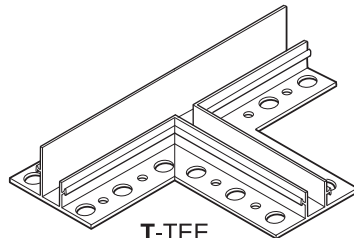
IC-INSIDE CORNER



OC-OUTSIDE CORNER



EC-END CLOSURE



T-TEE

PRODUCT NUMBER	DIMENSIONS		
	A	B	C
CS 50-50-100	1/2"	1/2"	1"
CS 58-50-100	5/8"	1/2"	1"
CS 75-50-100	3/4"	1/2"	1"
CS 50-50-125	1/2"	1/2"	1-1/4"
CS 58-50-125	5/8"	1/2"	1-1/4"
CS 75-50-125	3/4"	1/2"	1-1/4"
CS 50-50-150	1/2"	1/2"	1-1/2"
CS 58-50-150	5/8"	1/2"	1-1/2"
CS 75-50-150	3/4"	1/2"	1-1/2"

CS 50-75-100	1/2"	3/4"	1"
CS 58-75-100	5/8"	3/4"	1"
CS 75-75-100	3/4"	3/4"	1"
CS 50-75-125	1/2"	3/4"	1-1/4"
CS 58-75-125	5/8"	3/4"	1-1/4"
CS 75-75-125	3/4"	3/4"	1-1/4"
CS 50-75-150	1/2"	3/4"	1-1/2"
CS 58-75-150	5/8"	3/4"	1-1/2"
CS 75-75-150	3/4"	3/4"	1-1/2"

CS 50-100-100	1/2"	1"	1"
CS 58-100-100	5/8"	1"	1"
CS 75-100-100	3/4"	1"	1"
CS 50-100-125	1/2"	1"	1-1/4"
CS 58-100-125	5/8"	1"	1-1/4"
CS 75-100-125	3/4"	1"	1-1/4"
CS 50-100-150	1/2"	1"	1-1/2"
CS 58-100-150	5/8"	1"	1-1/2"
CS 75-100-150	3/4"	1"	1-1/2"

CS 50-150-100	1/2"	1-1/2"	1"
CS 58-150-100	5/8"	1-1/2"	1"
CS 75-150-100	3/4"	1-1/2"	1"
CS 50-150-125	1/2"	1-1/2"	1-1/4"
CS 58-150-125	5/8"	1-1/2"	1-1/4"
CS 75-150-125	3/4"	1-1/2"	1-1/4"
CS 50-150-150	1/2"	1-1/2"	1-1/2"
CS 58-150-150	5/8"	1-1/2"	1-1/2"
CS 75-150-150	3/4"	1-1/2"	1-1/2"

Channel Reveals Bandmaker™ Intersections – Creates 1/2" to 1-1/2" reveal in stucco & plaster surfaces, at the same time providing for a band. Designed with a reinforced Rib to assist in the heavy material fill when bands are used in architectural design. All with Connector Clips.

Factory fabricated Intersections of T's, L's, inside and outside angles, and end closure available to form a clear channel.

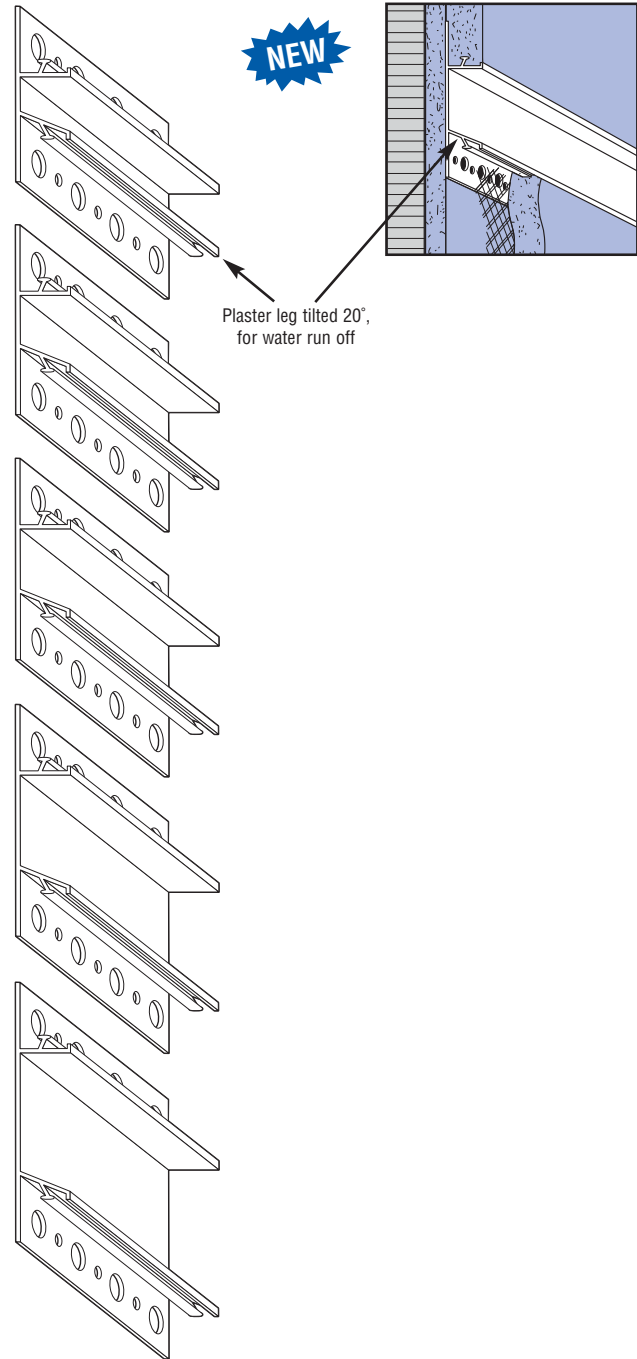
Caulk all intersections, butt joints, ends and corners at time of installation.

SDCS Self Drain Channel

PRODUCT NUMBER	GROUND	DIMENSIONS	PIECES PER BOX
SDCS-50-50	1/2"	1/2" reveal 2-1/2" overall width, perforated flanges	35
SDCS-58-50	5/8"		25
SDCS-75-50	3/4"		25
SDCS-78-50	7/8"		25
SDCS-100-50	1"		20
SDCS-50-75	1/2"	3/4" reveal 3-1/4" overall width, perforated flanges	35
SDCS-58-75	5/8"		25
SDCS-75-75	3/4"		25
SDCS-78-75	7/8"		18
SDCS-100-75	1"		15
SDCS-50-100	1/2"	1" reveal 3-1/4" overall width, perforated flanges	35
SDCS-58-100	5/8"		25
SDCS-75-100	3/4"		25
SDCS-78-100	7/8"		18
SDCS-100-100	1"		15
SDCS-50-150	1/2"	1-1/2" reveal 3-3/4" overall width, perforated flanges	20
SDCS-58-150	5/8"		20
SDCS-75-150	3/4"		20
SDCS-78-150	7/8"		17
SDCS-100-150	1"		12
SDCS-50-200	1/2"	2" reveal 5" overall width, perforated flanges	15
SDCS-58-200	5/8"		14
SDCS-75-200	3/4"		14
SDCS-78-200	7/8"		12
SDCS-100-200	1"		12

SDCS – Channel Reveal creates 1/2" to 2" reveal in stucco and plaster surface and allows (SELF DRAIN) rain water to run off the plaster wall. Clips are provided for alignment and a base sealant. Factory intersection of crosses T's are available.

Caulk all intersections, butt joints, ends and corners at time of installation.

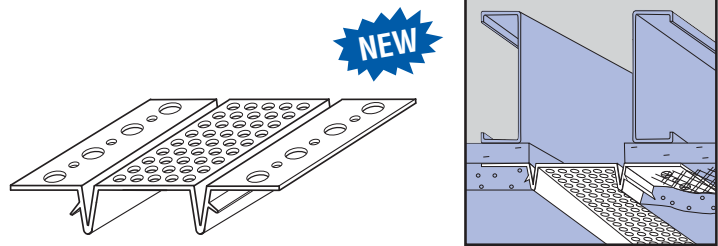


PRODUCT NUMBER	GROUND	DIMENSIONS	VENTED REVEAL	PIECES PER BOX
1538R-200V	3/8"	5" overall width, perforated flange	2"	20
1550R-200V	1/2"		2"	18
1558R-200V	5/8"		2"	18
1575R-200V	3/4"		2"	15
1578R-200V	7/8"		2"	12
15100R-200V	1"		2"	12

2" Soffit Vent – Continuous one piece combination design like a control joint allowing movement of the plaster with a 2" vent area. Vent clips are provided to connect soffit vent. Vent are 8 sq. inches per lineal foot.

Caulk all intersections, butt joints, ends and corners at time of installation.

2" Soffit Vent Control Joint Combination

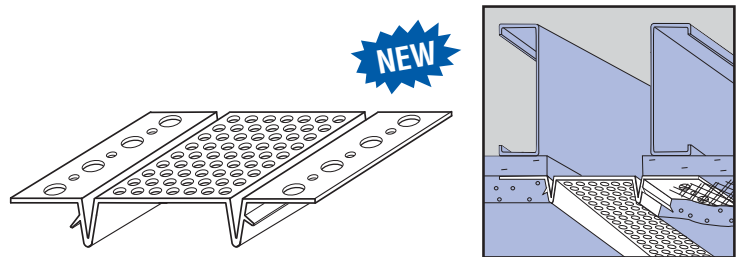


PRODUCT NUMBER	GROUND	DIMENSIONS	VENTED REVEAL	PIECES PER BOX
1538R-300V	3/8"	6" overall width, perforated flange	3"	15
1550R-300V	1/2"		3"	15
1558R-300V	5/8"		3"	12
1575R-300V	3/4"		3"	12
1578R-300V	7/8"		3"	10
15100R-300V	1"		3"	10

3" Soffit Vent – Continuous one piece combination design like a control joint allowing movement of the plaster with a 3" vent area. Vent clips are provided to connect soffit vent. Vent are 15 sq. inches per lineal foot.

Caulk all intersections, butt joints, ends and corners at time of installation.

3" Soffit Vent Control Joint Combination

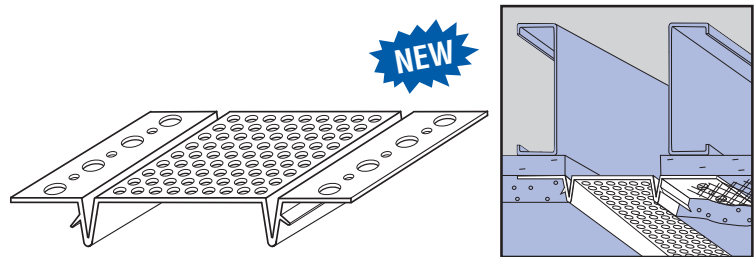


PRODUCT NUMBER	GROUND	DIMENSIONS	VENTED REVEAL	PIECES PER BOX
1538R-400V	3/8"	7" overall width, perforated flange	4"	12
1550R-400V	1/2"		4"	12
1558R-400V	5/8"		4"	10
1575R-400V	3/4"		4"	8
1578R-400V	7/8"		4"	8
15100R-400V	1"		4"	8

4" Soffit Vent – Continuous one piece combination design like a control joint allowing movement of the plaster with a 4" vent area. Vent clips are provided to connect soffit vent. Vent are 16 sq. inches per lineal foot.

Caulk all intersections, butt joints, ends and corners at time of installation.

4" Soffit Vent Control Joint Combination



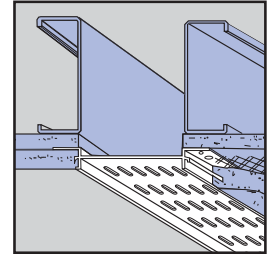
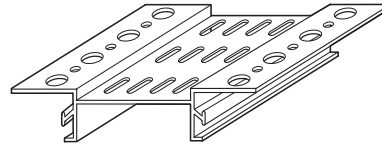
2" Architectural Soffit Vent

PRODUCT NUMBER	GROUND	DIMENSIONS	PIECES PER BOX
ACS-50-200V	1/2"	2" wide vent, 4" overall width, perforated flanges	20
ACS-58-200V	5/8"		18
ACS-75-200V	3/4"		15
ACS-78-200V	7/8"		13
ACS-100-200V	1"		12

ACS – Series of One Piece Soffit Vent – with reinforcing Rib to key into stucco. 3/4 inch elongated vent holes. Vent Clips are provided to connect Soffit Vents.

Vent area: 7 square inches per lineal ft.

Caulk all intersections, butt joints, ends and corners at time of installation.



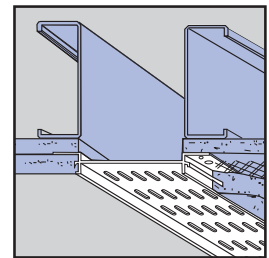
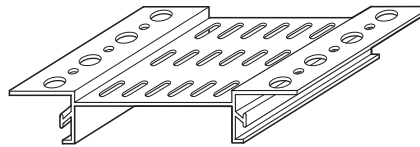
3" Architectural Soffit Vent

PRODUCT NUMBER	GROUND	DIMENSIONS	PIECES PER BOX
ACS-50-300V	1/2"	3" wide vent, 5" overall width, perforated flanges	18
ACS-58-300V	5/8"		15
ACS-75-300V	3/4"		15
ACS-78-300V	7/8"		13
ACS-100-300V	1"		12

ACS – Series of One Piece Soffit Vent – with reinforcing Rib to key into stucco. 3/4 inch elongated vent holes. Vent Clips are provided to connect Soffit Vents.

Vent area: 8 square inches per lineal ft.

Caulk all intersections, butt joints, ends and corners at time of installation.



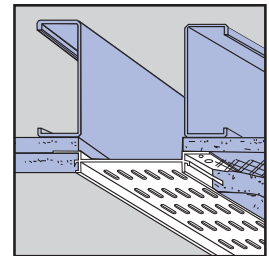
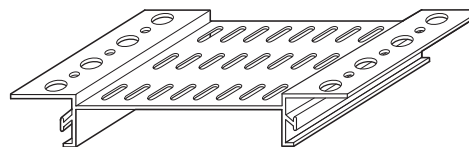
4" Architectural Soffit Vent

PRODUCT NUMBER	GROUND	DIMENSIONS	PIECES PER BOX
ACS-50-400V	1/2"	4" wide vent, 6" overall width, perforated flanges	20
ACS-58-400V	5/8"		18
ACS-75-400V	3/4"		14
ACS-78-400V	7/8"		12
ACS-100-400V	1"		10

ACS – Series of One Piece Soffit Vent – with reinforcing Rib to key into stucco. 3/4 inch elongated vent holes. Vent Clips are provided to connect Soffit Vents.

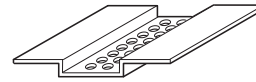
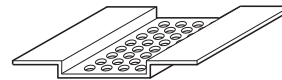
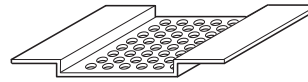
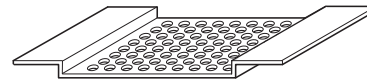
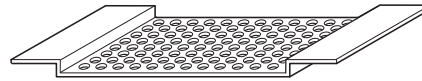
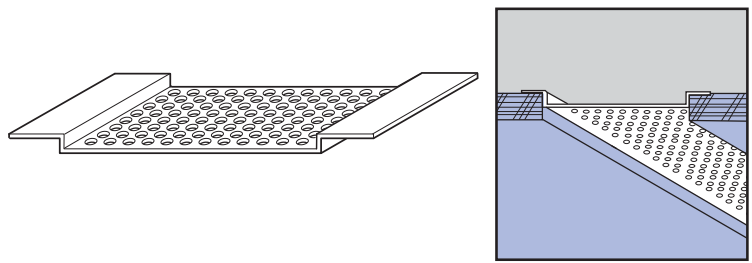
Vent area: 9 square inches per lineal ft.

Caulk all intersections, butt joints, ends and corners at time of installation.



Miscellaneous Soffit Vents (6", 4", 3", 2", 1-1/2", & 1")

PRODUCT NUMBER	GROUND	DIMENSIONS	PIECES PER BOX
V-600	3/8"	6" wide vent (one piece), 7-3/8" overall width	20
<p>6" Soffit Vent – One-piece Soffit Vent designed for plywood, soffit board, and three-piece stucco & plaster vents. Vent Clips are provided to connect Soffit Vent and assist in alignment. Vent area: 18 square inches per lineal ft. Caulk all intersections, butt joints, ends and corners at time of installation.</p>			
V-400	3/8"	4" wide vent (one piece), 5-3/8" overall width	25
<p>4" Soffit Vent – One-piece Soffit Vent designed for plywood, soffit board, and three-piece stucco & plaster vents. Vent Clips are provided to connect Soffit Vent and assist in alignment. Vent area: 16 square inches per lineal ft. Caulk all intersections, butt joints, ends and corners at time of installation.</p>			
V-300	3/8"	3" wide vent (one piece), 4-3/8" overall width	40
<p>3" Soffit Vent – One-piece Soffit Vent designed for plywood, soffit board, and three-piece stucco & plaster vents. Vent Clips are provided to connect Soffit Vent and assist in alignment. Vent area: 15 square inches per lineal ft. Caulk all intersections, butt joints, ends and corners at time of installation.</p>			
V-200	3/8"	2" wide vent (one piece), 3-3/8" overall width	40
<p>2" Soffit Vent – One-piece Soffit Vent designed for plywood, soffit board, and three-piece stucco & plaster vents. Vent Clips are provided to connect Soffit Vent and assist in alignment. Vent area: 8 square inches per lineal ft. Caulk all intersections, butt joints, ends and corners at time of installation.</p>			
V-150	3/8"	1-1/2" wide vent (one piece), 2-7/8" overall width	40
<p>1-1/2" Soffit Vent – One-piece Soffit Vent designed for plywood, soffit board, and three-piece stucco & plaster vents. Vent Clips are provided to connect Soffit Vent and assist in alignment. Vent area: 6 square inches per lineal ft. Caulk all intersections, butt joints, ends and corners at time of installation.</p>			
V-100	3/8"	1" wide vent (one piece), 2-3/8" overall width	40
<p>1" Soffit Vent – One-piece Soffit Vent designed for plywood, soffit board, and three-piece stucco & plaster vents. Vent Clips are provided to connect Soffit Vent and assist in alignment. Vent area: 4 square inches per lineal ft. Caulk all intersections, butt joints, ends and corners at time of installation.</p>			



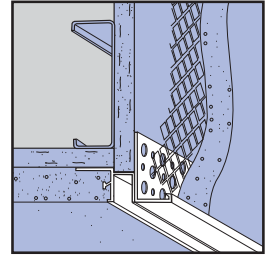
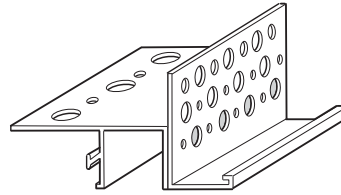
Stucco & Plaster

NOTE: Mitered Connector Clips Available.

1" Drip Screed Reveals

PRODUCT NUMBER	GROUND	DIMENSIONS	PIECES PER BOX
DCS50-100	1/2"	1" wide reveal 1-3/4" vertical flange, perforated flanges	10
DCS58-100	5/8"		10
DCS75-100	3/4"		9
DCS78-100	7/8"		9
DCS100-100	1"		9

1" Drip Screed Reveals – Designed for stucco or plaster soffits when a drip and reveal need to be combined.
Caulk all intersections, butt joints, ends and corners at time of installation.

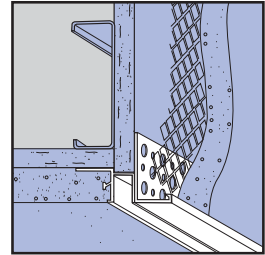
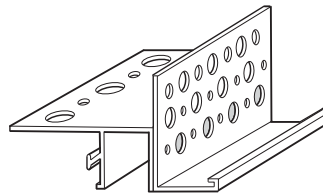


NOTE: Dissimilar grounds may be specified

3/4" Drip Screed Reveals

PRODUCT NUMBER	GROUND	DIMENSIONS	PIECES PER BOX
DCS50-75	1/2"	3/4" wide reveal 1-3/4" vertical flange, perforated flange	10
DCS58-75	5/8"		10
DCS75-75	3/4"		9
DCS78-75	7/8"		9
DCS100-75	1"		9

3/4" Drip Screed Reveals – Designed for stucco or plaster soffits when a drip and reveal need to be combined.
Caulk all intersections, butt joints, ends and corners at time of installation.

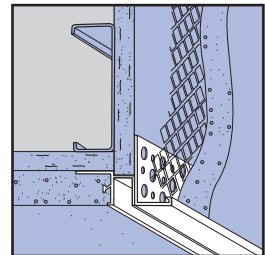
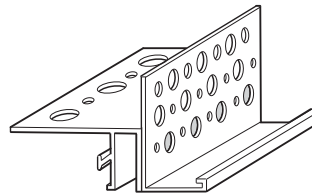


NOTE: Dissimilar grounds may be specified

1/2" Drip Screed Reveals

PRODUCT NUMBER	GROUND	DIMENSIONS	PIECES PER BOX
DCS50-50	1/2"	1/2" wide reveal 1-3/4" vertical flange, perforated flange	10
DCS58-50	5/8"		10
DCS75-50	3/4"		9
DCS78-50	7/8"		9
DCS100-50	1"		9

1/2" Drip Screed Reveals – Designed for stucco or plaster soffits when a drip and reveal need to be combined.
Caulk all intersections, butt joints, ends and corners at time of installation.

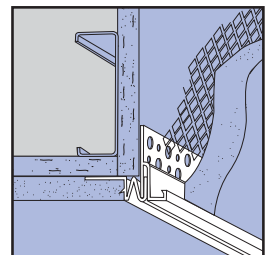
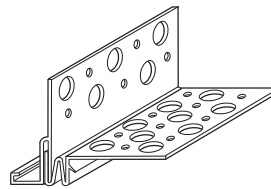


NOTE: Dissimilar grounds may be specified

1/4" Drip "V" Screeds

PRODUCT NUMBER	GROUND	DIMENSIONS	PIECES PER BOX
DS15-38	3/8"	1/4" "V" reveal 2" overall width, 2" vertical flange, perforated flanges	15
DS15-50	1/2"		15
DS15-58	5/8"		15
DS15-75	3/4"		15
DS15-78	7/8"		15
DS15-100	1"		15

1/4" Deep "V" Drip Screeds – Designed for stucco or plaster soffits when a drip and reveal need to be combined.
Caulk all intersections, butt joints, ends and corners at time of installation.



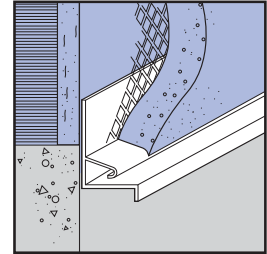
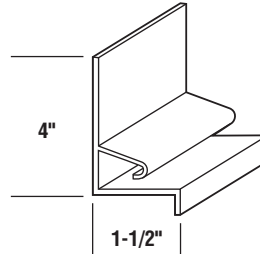
NOTE: Dissimilar grounds may be specified

4" Positive Drain Weep Screed (Unperforated Flange)

PRODUCT NUMBER	GROUND	DIMENSIONS	PIECES PER BOX
WSZ75-400	3/4"	4" overall width, unperforated flange	10
WSZ78-400	7/8"		10

Positive Drain Weep Screed (With Unperforated Flange) – Design to relieve moisture from stucco. Positive drain ground leg tilted 45°, so water can run off, a secondary 1-1/2" leg helps push water away from the stucco wall.

Caulk all intersections, butt joints, ends and corners at time of installation.

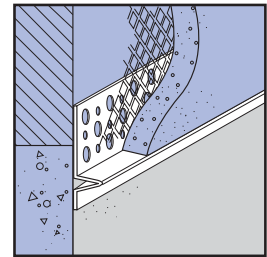
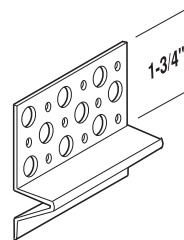


2-1/2" Weep Screeds (Perforated Flange)

PRODUCT NUMBER	GROUND	DIMENSIONS	PIECES PER BOX
WS38-250	3/8"	2-1/2" overall width, perforated flange	70
WS50-250	1/2"		70
WS58-250	5/8"		70
WS75-250	3/4"		70
WS78-250	7/8"		60

Weep Screed (With Perforated Flange) – Designed to relieve moisture from stucco and act as a stop. Install on masonry construction where stucco and foundation walls meet.

Caulk all intersections, butt joints, ends and corners at time of installation.

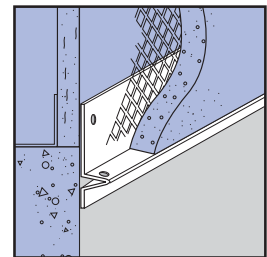
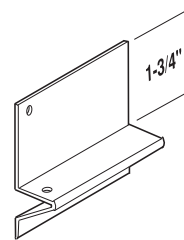


2-1/2" Weep Screeds (Unperforated Flange)

PRODUCT NUMBER	GROUND	DIMENSIONS	PIECES PER BOX
WS38-250U	3/8"	2-1/2" overall width, unperforated flange	70
WS50-250U	1/2"		70
WS58-250U	5/8"		70
WS75-250U	3/4"		70
WS78-250U	7/8"		60

Weep Screed (With Unperforated Flange) – Designed to relieve moisture from stucco and act as a stop. Install on frame construction where stucco and foundation walls meet.

Caulk all intersections, butt joints, ends and corners at time of installation.

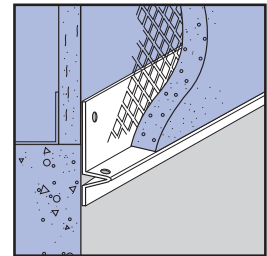
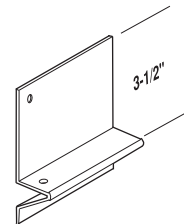


3-1/2" Weep Screeds (Unperforated Flange)

PRODUCT NUMBER	GROUND	DIMENSIONS	PIECES PER BOX
WS38-350U	3/8"	4" overall width, unperforated flange	50
WS50-350U	1/2"		50
WS58-350U	5/8"		40
WS75-350U	3/4"		40
WS78-350U	7/8"		30
WS138-350U	1-3/8"		30

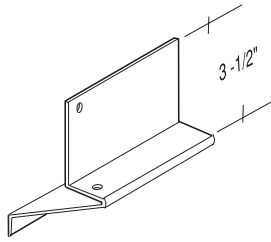
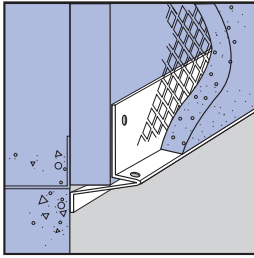
Weep Screed (With Unperforated Flange) – Designed to relieve moisture from stucco and act as a stop. Install on frame construction where stucco and foundation walls meet.

Caulk all intersections, butt joints, ends and corners at time of installation.



Foundation Weep Screeds

(Extended Ground Leg and Unperforated Flange)

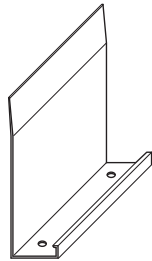
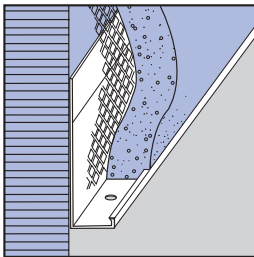


PRODUCT NUMBER	GROUND	DIMENSIONS	PIECES PER BOX
WSL50-350U	1/2"	3-1/2" overall width, unperforated flange, 1/2" back leg	50
WSL58-350U	5/8"		40
WSL78-350U	7/8"		40
WSL138-350U	1-3/8"		30

Foundation Weep Screeds (With Perforated Flange) – Designed to release moisture from stucco and act as a stop, with extended leg to go under board. Install on frame construction where stucco and foundation meet.

Caulk all intersections, butt joints, ends and corners at time of installation.

Foundation Weep Screeds

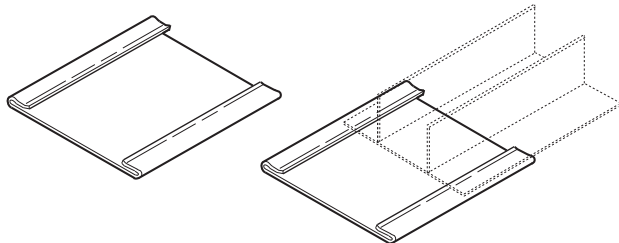


PRODUCT NUMBER	GROUND	DIMENSIONS	PIECES PER BOX
FWS6678W	7/8"	3-1/2" overall width, unperforated flange	40
FWS66138W	1-3/8"		40

Foundation Weep Screeds (With Unperforated Flange) – Acts as stop, and is designed with an unperforated flange to allow moisture removal from stucco installations on frame construction at the foundation line.

Caulk all intersections, butt joints, ends and corners at time of installation.

Connector Clips (For Channel Reveals)



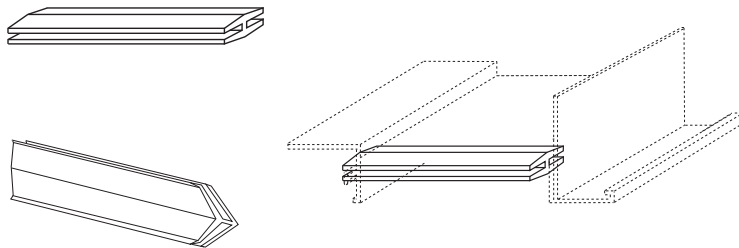
PRODUCT NUMBER	DIMENSIONS	WIDTH
CC50	2-1/4" inside measurement, length 3"	1/2"
CC75	3-1/4" inside measurement, length 3"	3/4"
CC100	3-1/4" inside measurement, length 3"	1"
CC150	3-1/4" inside measurement, length 3"	1-1/2"
CC200	4-1/8" inside measurement, length 3"	2"
CC250	4-7/8" inside measurement, length 3"	2-1/2"
CC300	4-7/8" inside measurement, length 3"	3"

Connector Clips – Designed to be used with Channel Reveals as a base for sealants and to assist in alignment.

NOTE: Pieces per carton are determined by product mix per order.

Caulk all intersections, butt joints, ends and corners at time of installation.

Straight & Mitered Connector Clips for Soffit Vents



PRODUCT NUMBER	WIDTH	PRODUCT NUMBER	WIDTH
Straight Connector Clips		Mitered Connector Clips	
VC100	1"	VC100C	1"
VC150	1-1/2"	VC150C	1-1/2"
VC200	2"	VC200C	2"
VC300	3"	VC300C	3"
VC400	4"	VC400C	4"
VC600	6"	VC600C	6"

Connector Clips for Soffit Vents – Connects multiple sections and assists in the alignment of Soffit Vents.

NOTE: Pieces per carton are determined by product mix per order.

Caulk all intersections, butt joints, ends and corners at time of installation.